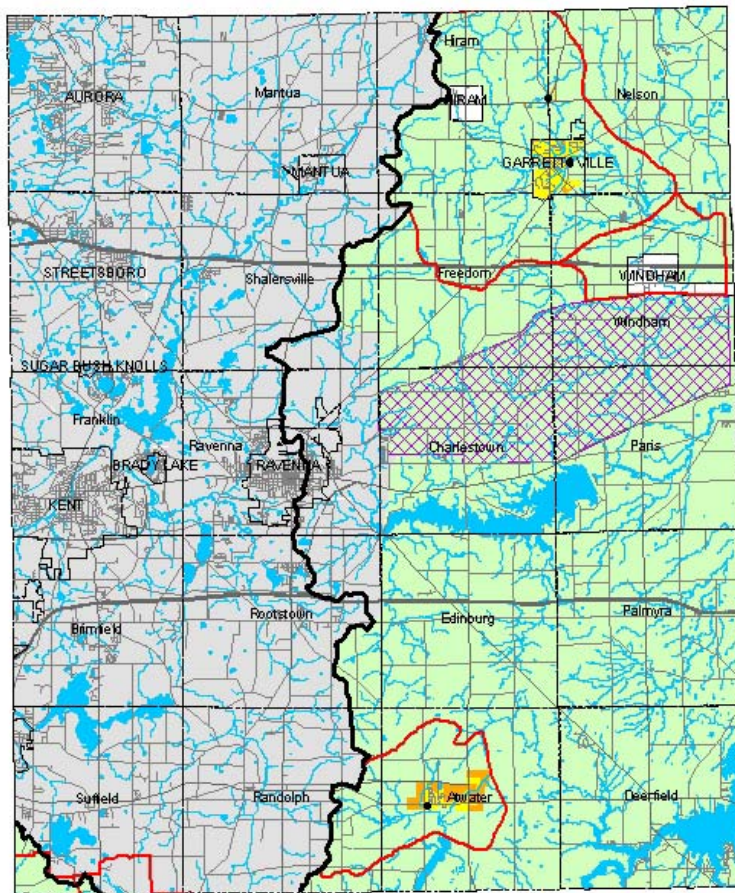


Appendix 3-2

Portage County Facilities Planning Areas (FPA)

DRAFT Portage County Facilities Planning Areas
208 Clean Water Plan Update



- Areas Currently Served with Sanitary Sewers
- Areas Expected to be Served with Sanitary Sewers within the Next 20 Years
- Areas that will be Served by Home Sewage and Semi-Public Sewage Disposal Systems
- Areas that will be Served by a POTW or by Home Sewage and Semi-Public Sewage Disposal Systems
- Areas without a Wastewater Treatment Planning Prescription
- Lake Erie Basin
- Lakes and Ponds
- Ravenna Arsenal
- Basin Divide
- FPA Boundary
- Stream
- Community Boundary
- Highway
- Road
- Wastewater Treatment Plant

* Please see Clean Water Plan text for a complete explanation of the mapping categories.

Northwest Ohio Four County Regional Planning and Development Organization, May 2005.