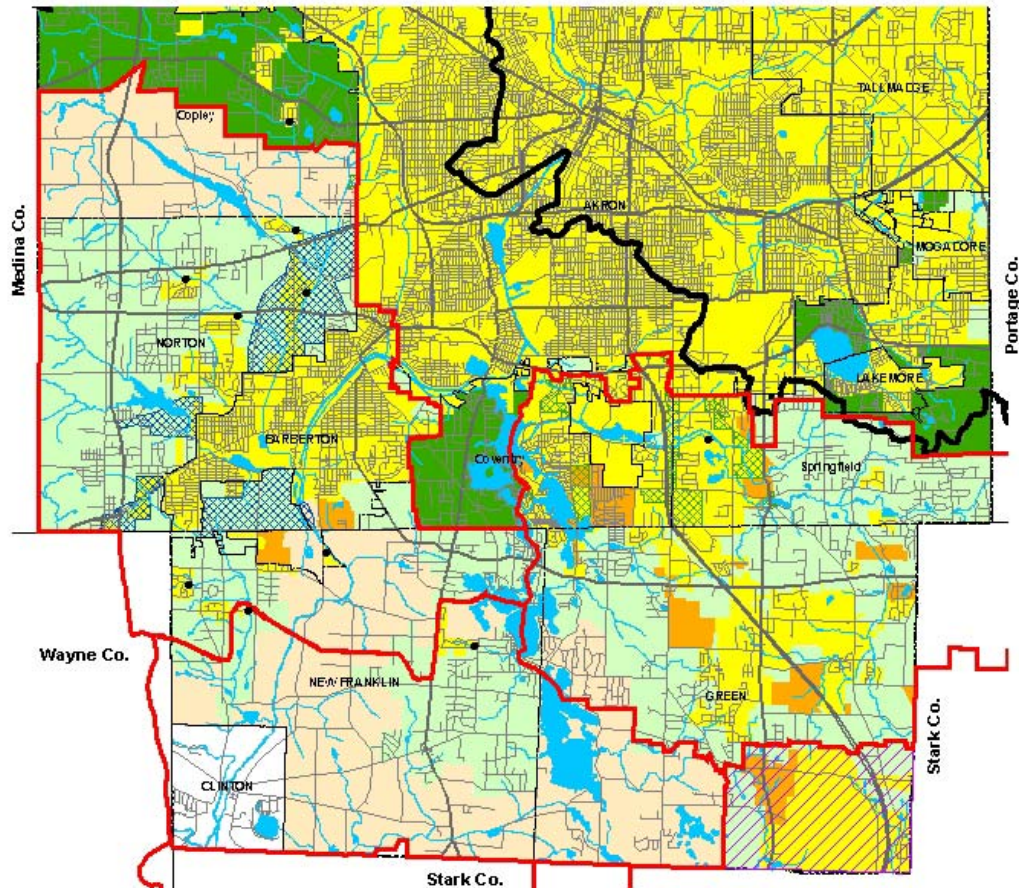


Appendix 3-19

Summit County Facilities Planning Areas (FPA)

DRAFT

Summit County Facilities Planning Areas 208 Clean Water Plan Update



- Areas Currently Served with Sanitary Sewers
- Areas Expected to be Served with Sanitary Sewers within the Next 20 years
- Areas that will be served by On-site Non-Discharging Systems
- Areas that will be served by POTW or by On-site Nondischarging Systems
- Joint Economic Development District (Lake Erie Basin Plan)
- Areas without a Wastewater Treatment Planning Prescription
- Akron Joint Economic Development District
- Barberton-Norton Joint Economic Development District
- Stark-Summit Service Area
- Lakes and Ponds
- FPA Boundary
- Basin Divide
- Stream
- Community Boundary
- Road
- Highway
- Publicly-Owned Wastewater Treatment Plant

* Please see Clean Water Plan text for a complete explanation of the mapping categories.
Northeast Ohio Four County Regional Planning and Development Organization, July 2005.